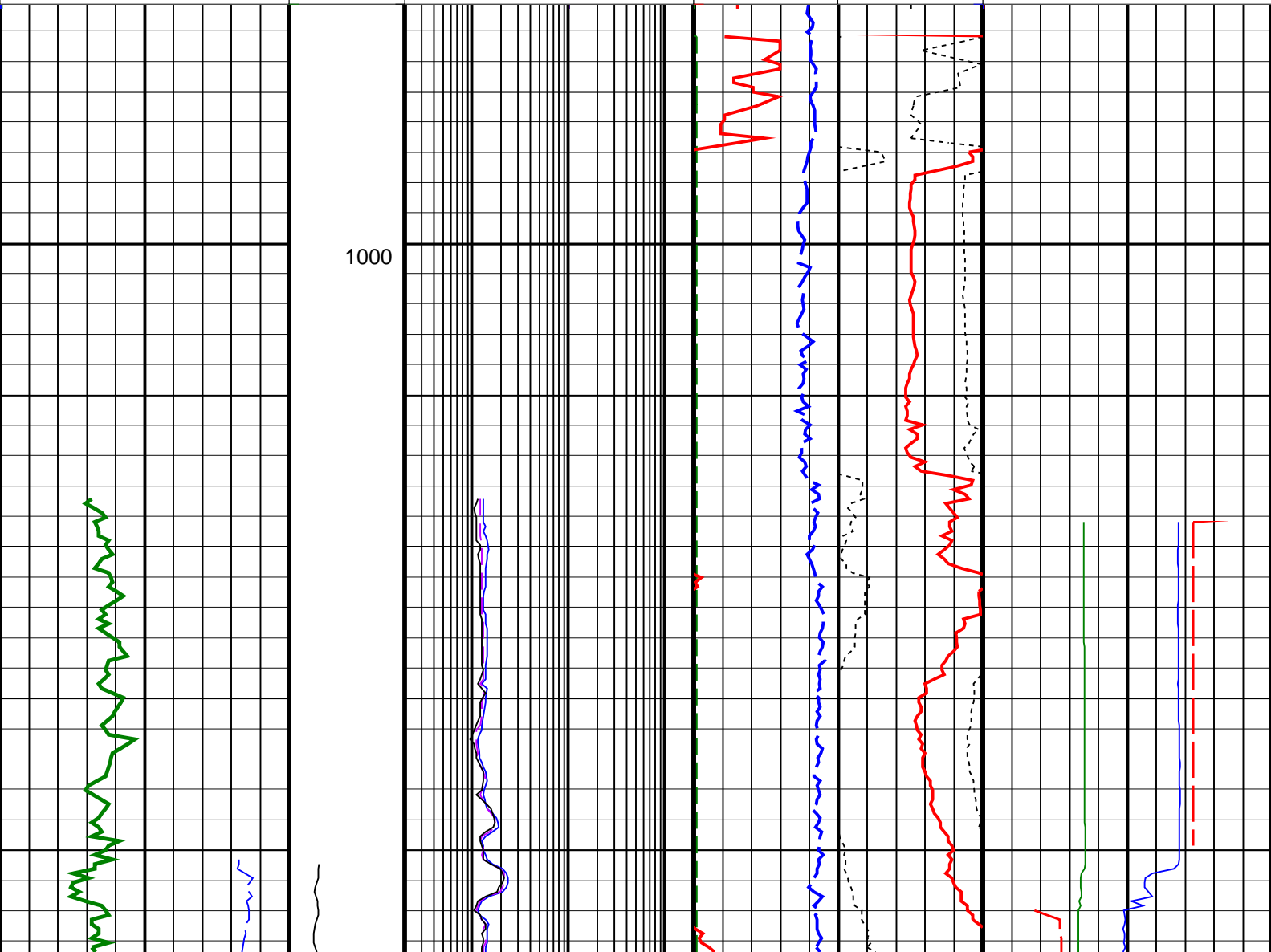
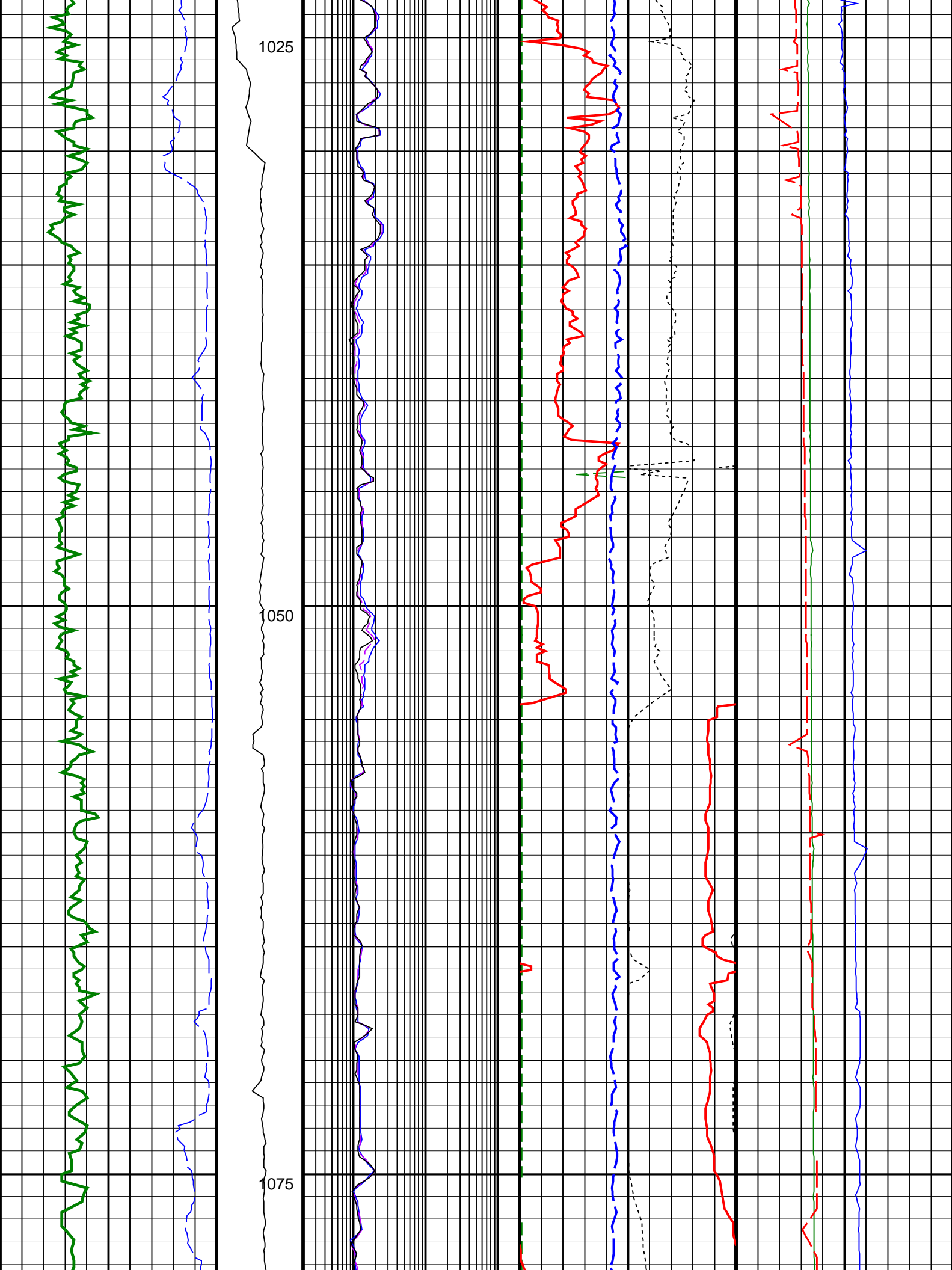


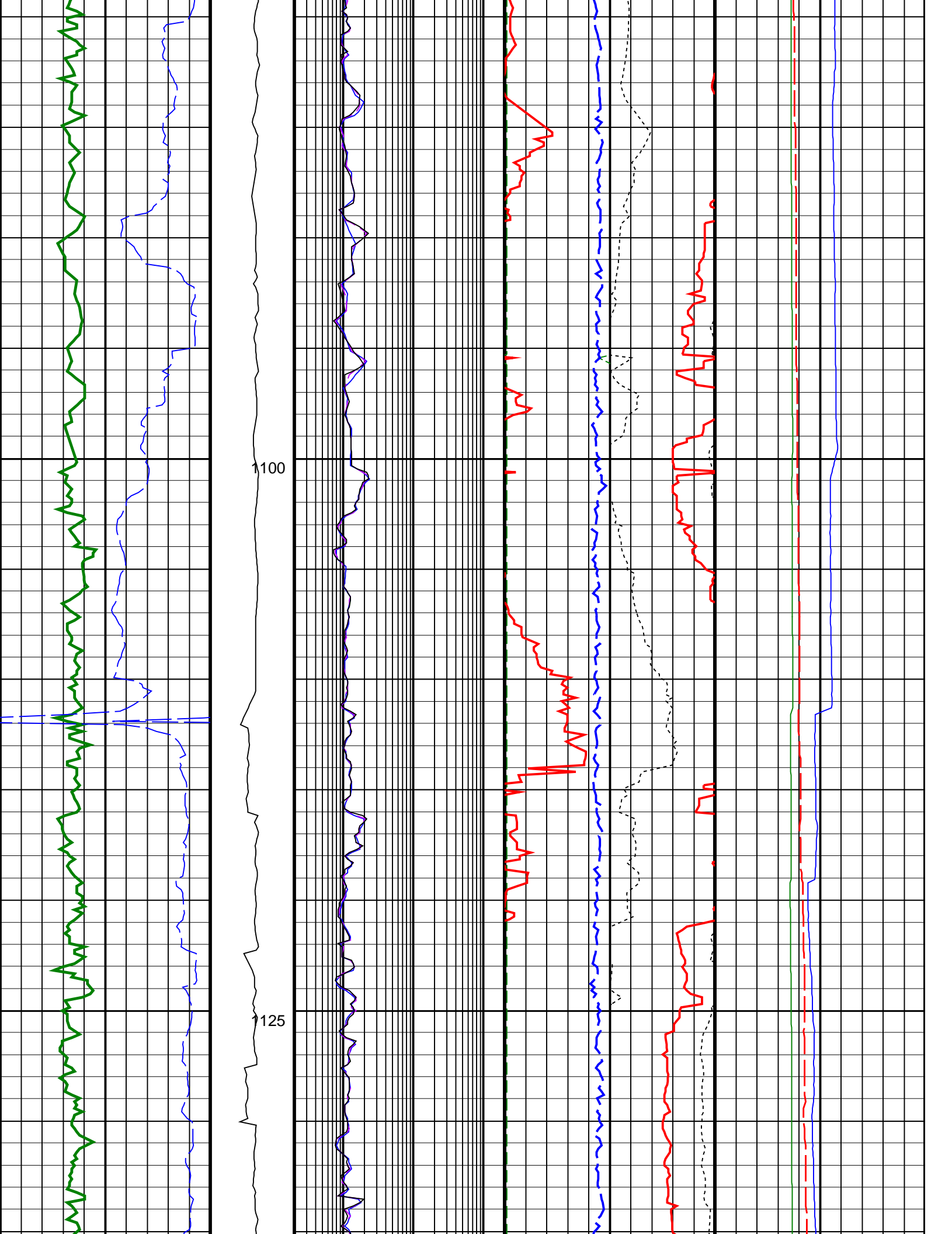
PIP SUMMARY

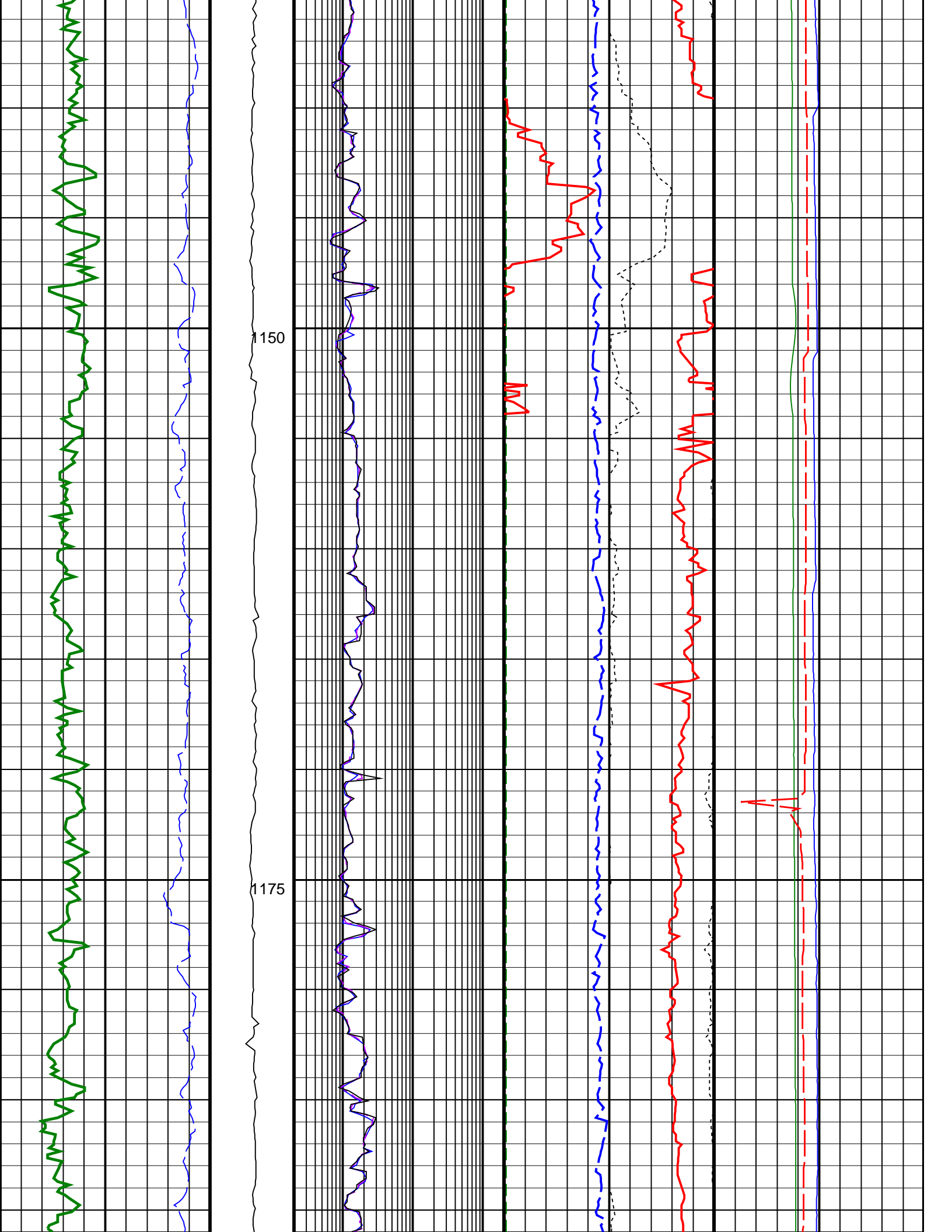
└─ Density Samples ─┐
└─ Gamma Ray Samples
└─ Resistivity Samples
Neutron Samples ─┐

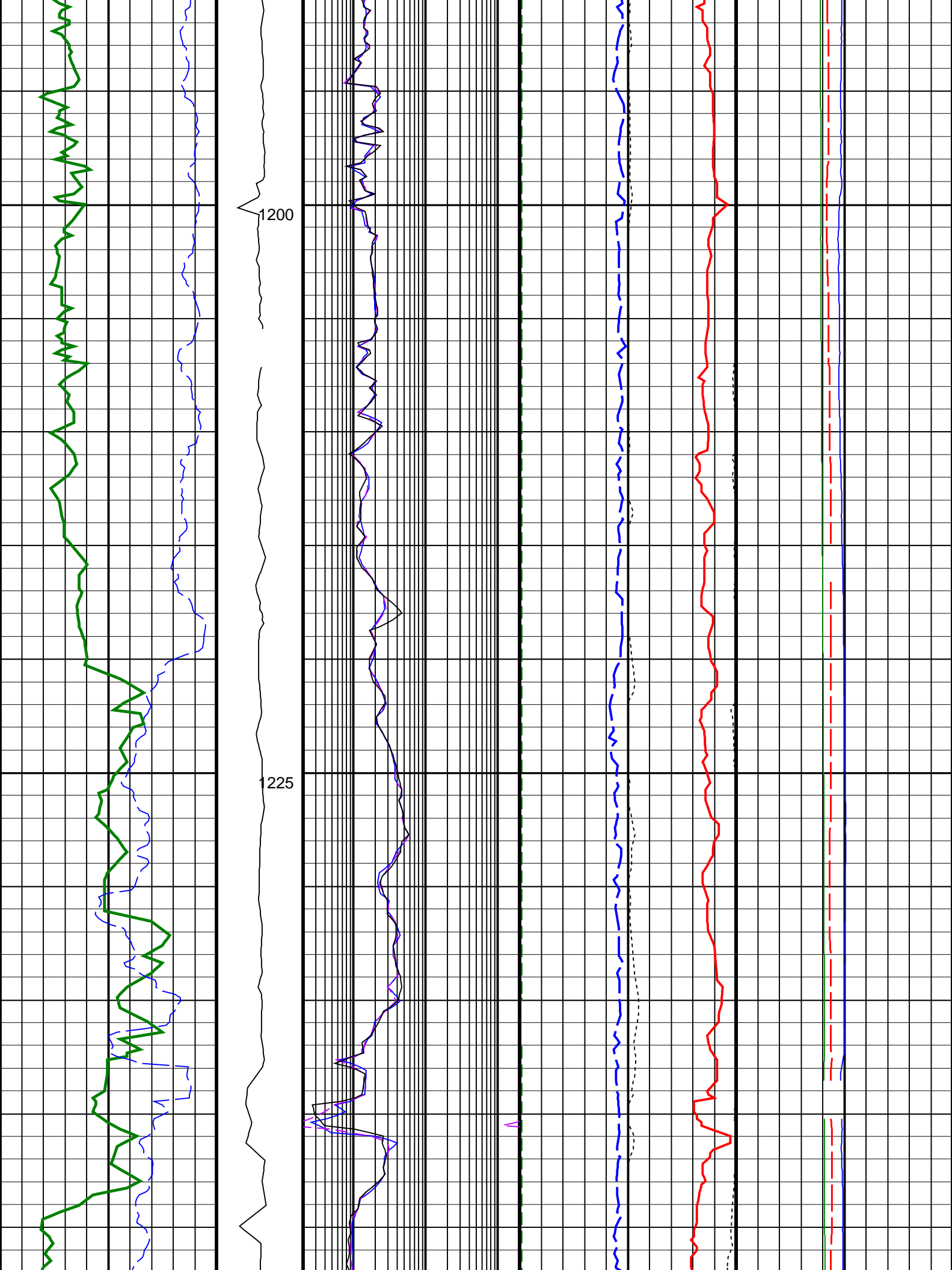
		ARC BHCorr Phase-Shift Resistivity 40-in. at 2 MHz, Real-Time (P40H_RT) 0.2 (OHMM) 200	Thermal Neutron Ratio, Bottom, Real-Time (TNRB_RT) 45 (PU) -15	ARC Equivalent Circulating density (ECD_ARC_RT) 10 (LB/G) 15
ARC Gamma Ray, Real-Time (ARC_GR_RT) 0 (GAPI) 200		ARC BHCorr Phase-Shift Resistivity 28-in. at 2 MHz, Real-Time (P28H_RT) 0.2 (OHMM) 200	Bulk Density, Bottom, Real-Time Computed Downhole (ROBB_DH_RT) 1.85 (G/C3) 2.85	ARC Annulus Temperature (ATMP_RT) 0 (DEGC) 200
ROP*5 (ROP5) (M/HR) 200 0	MWD Collar RPM (CRPM_RT) (RPM) 0 400	ARC BHCorr Phase-Shift Resistivity 16-in. at 2 MHz, Real-Time (P16H_RT) 0.2 (OHMM) 200	Photoelectric Factor, Bottom, Real-Time Computed Downhole (PEB_RT) (G/C3) 0 (-10) 10	ARC Annulus Pressure (APRS_RT) 0 (PSI) 6000
			Bulk Density Correction, Bottom, Real-Time Computed Downhole (DRHB_DH_RT) (G/C3) -0.25 0.25	

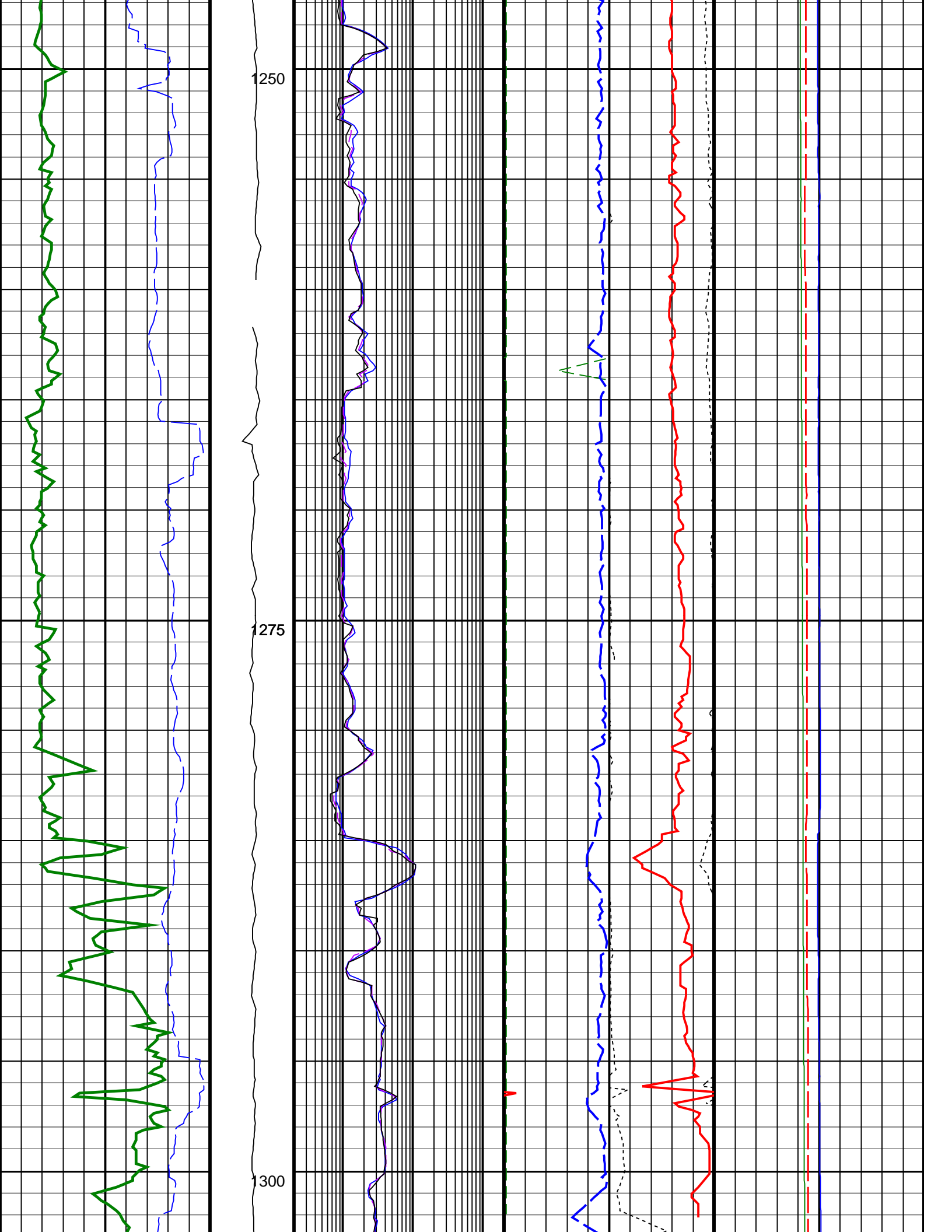


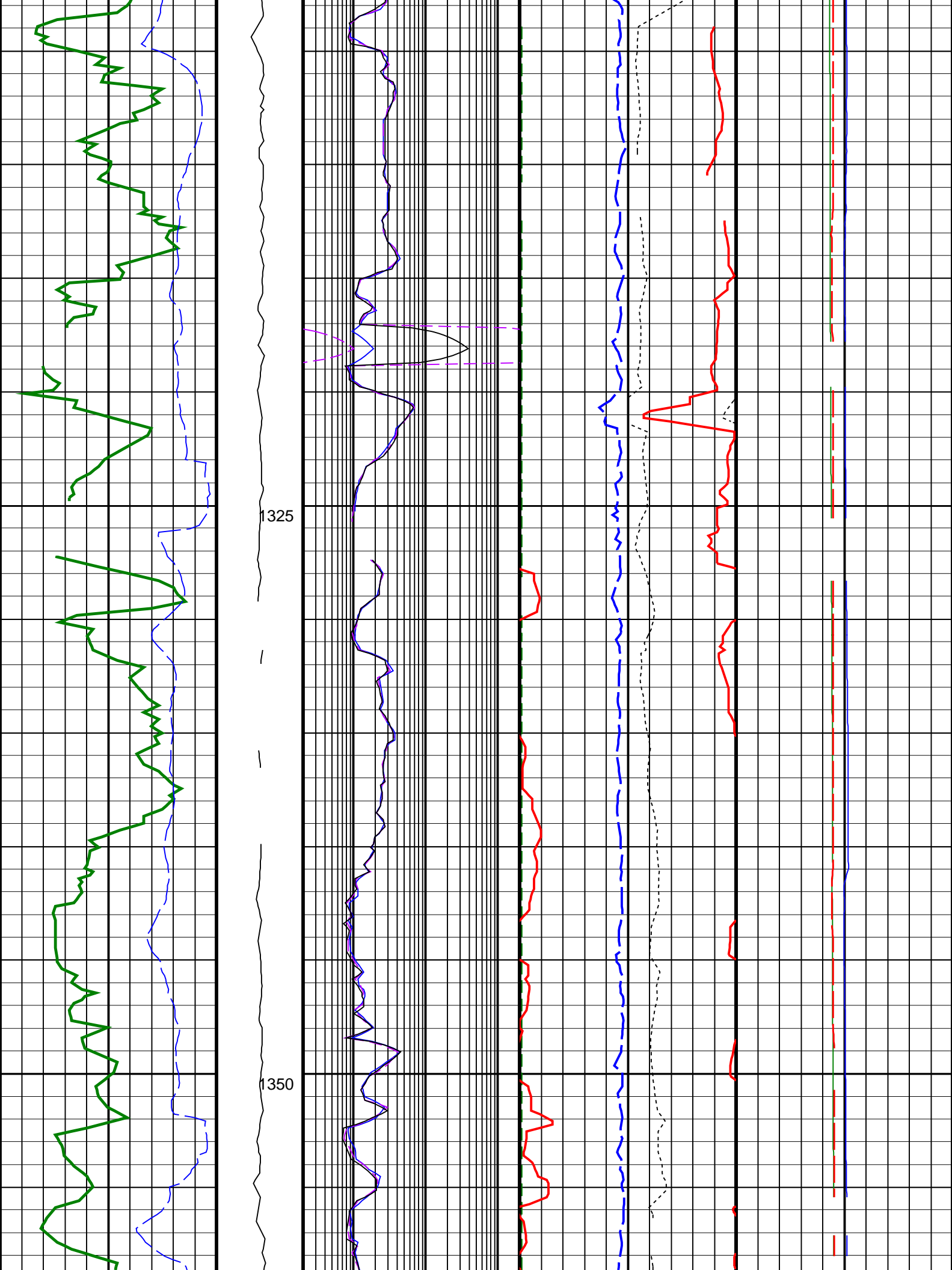


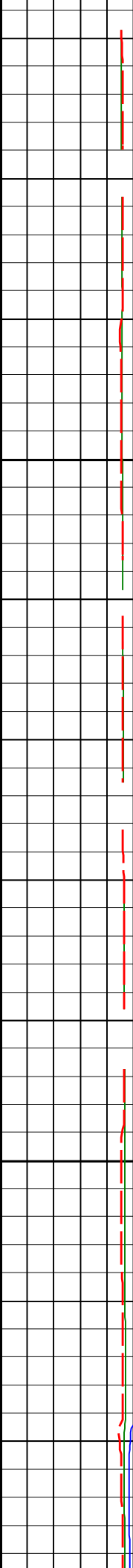
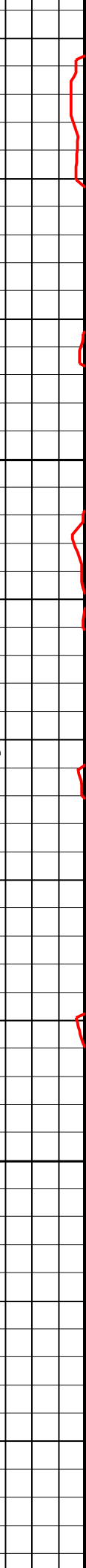
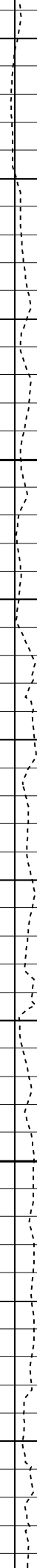
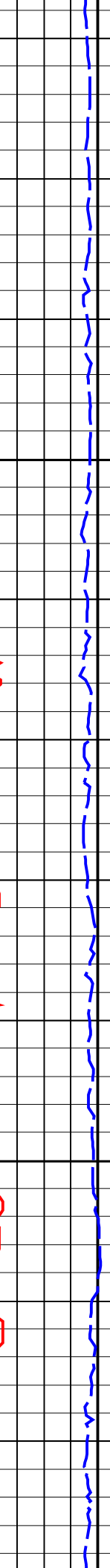
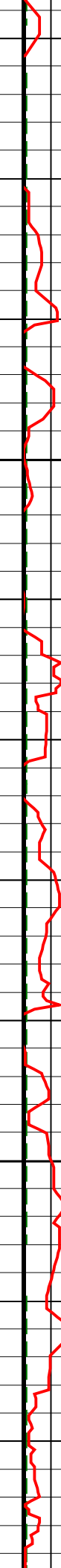
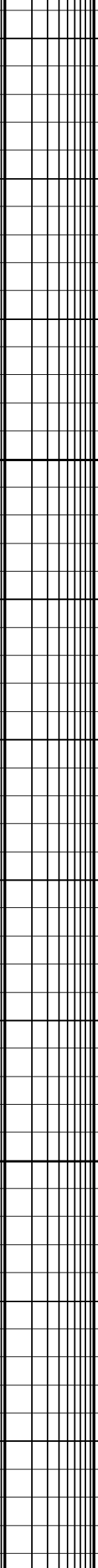
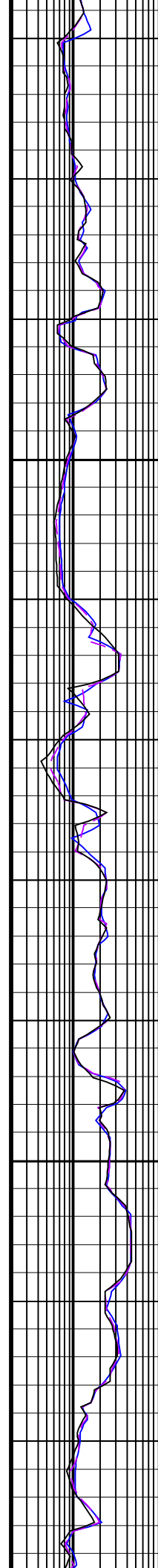
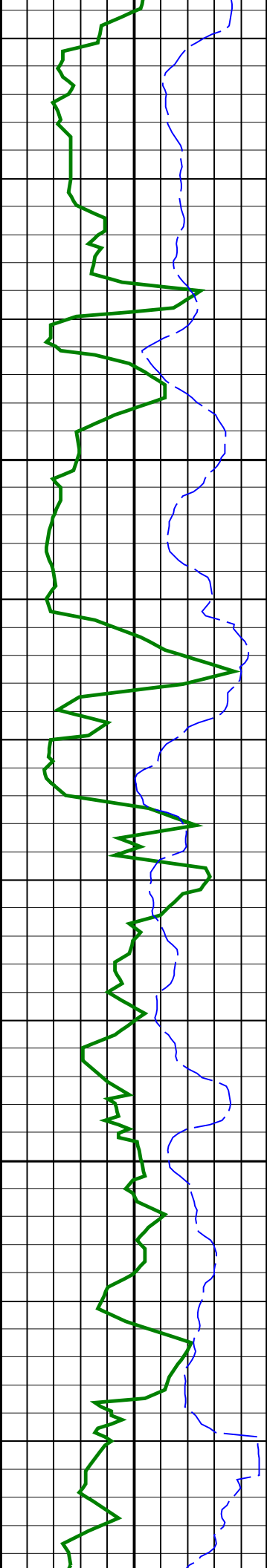


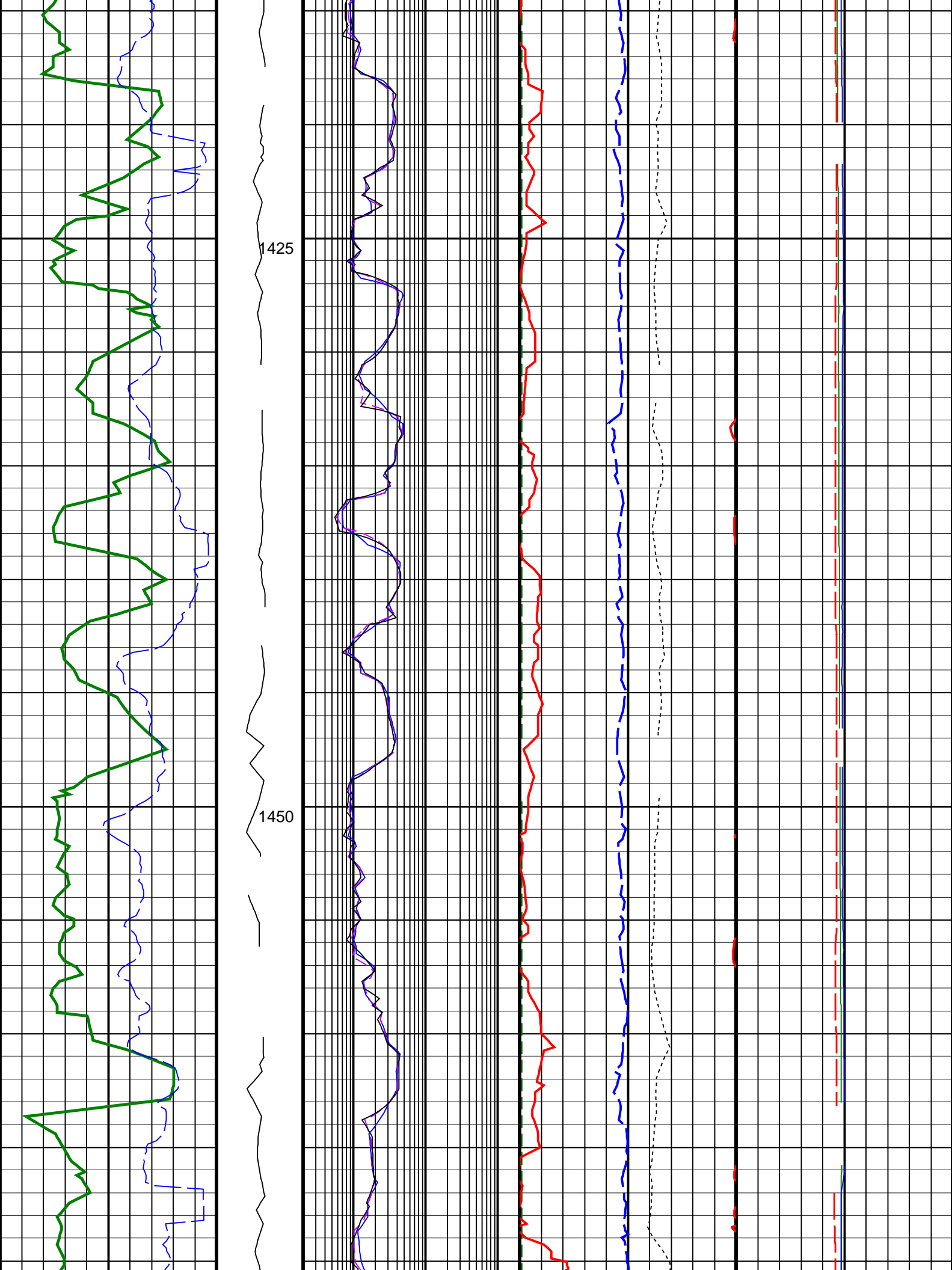


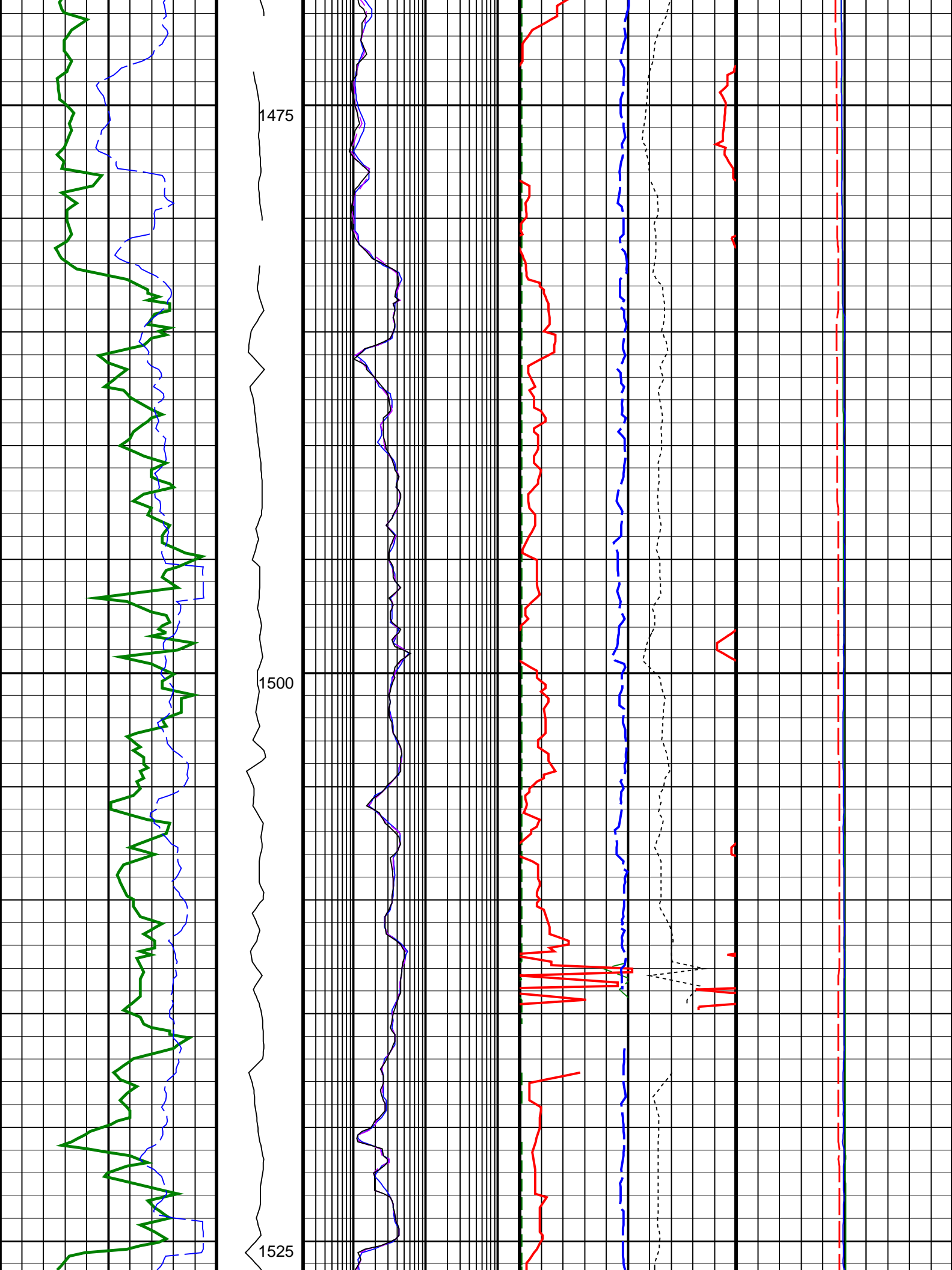


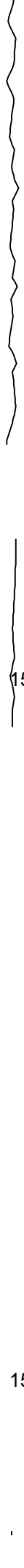
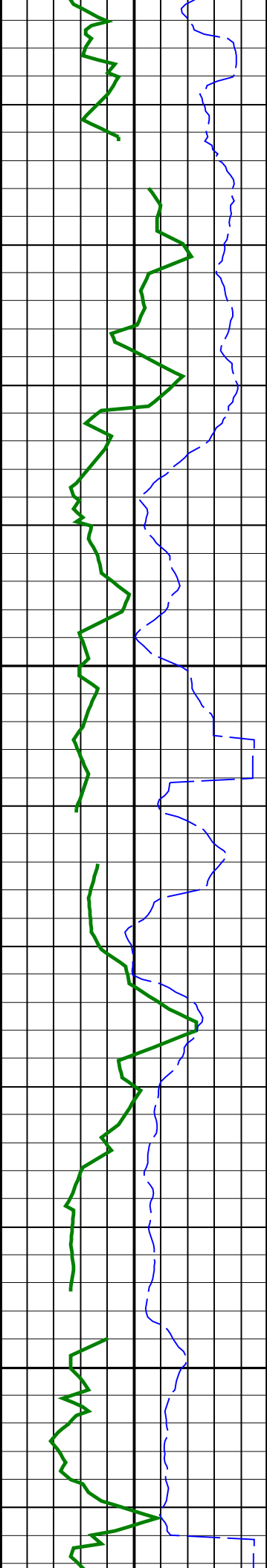






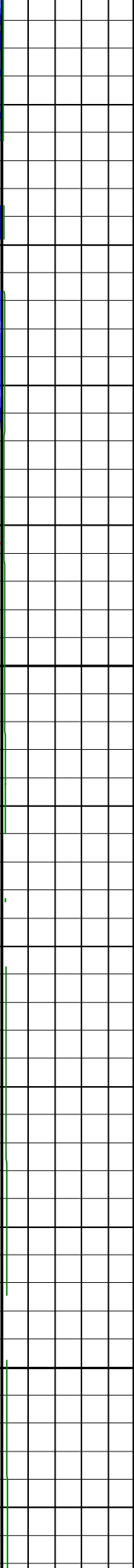
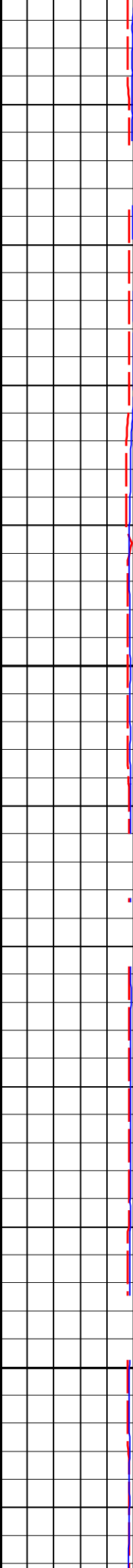
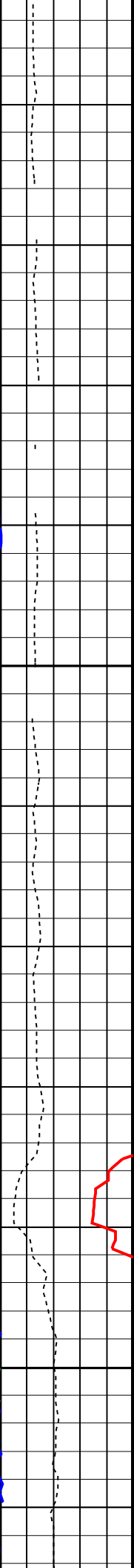
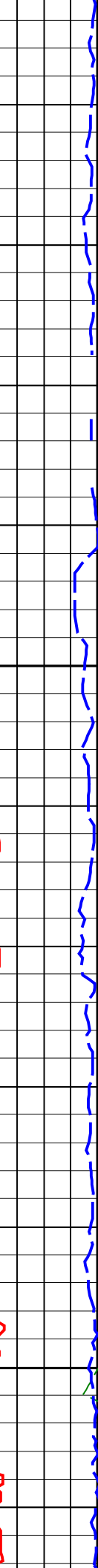
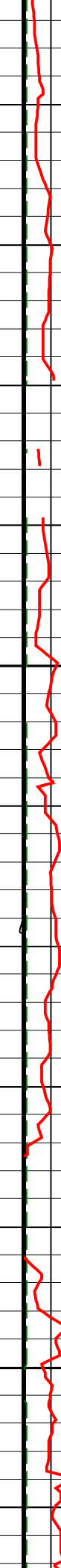
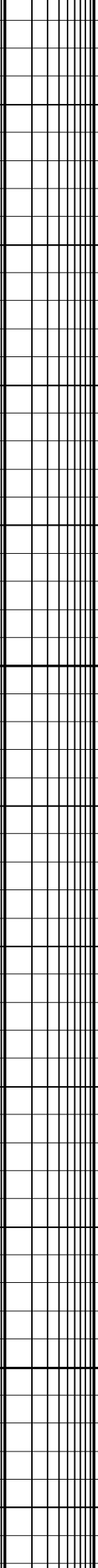
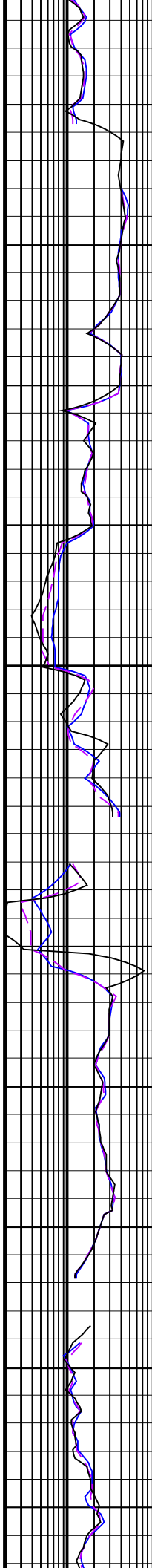


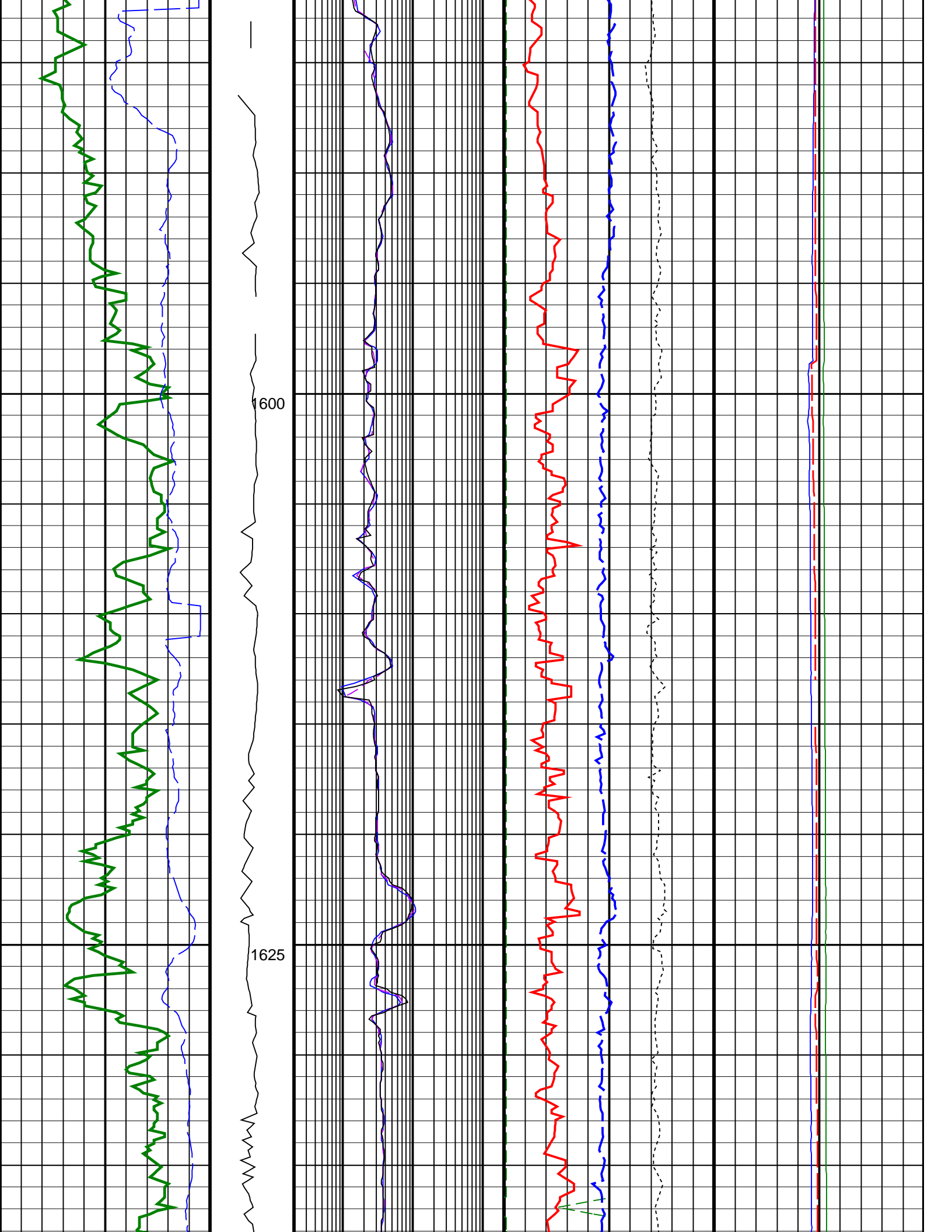


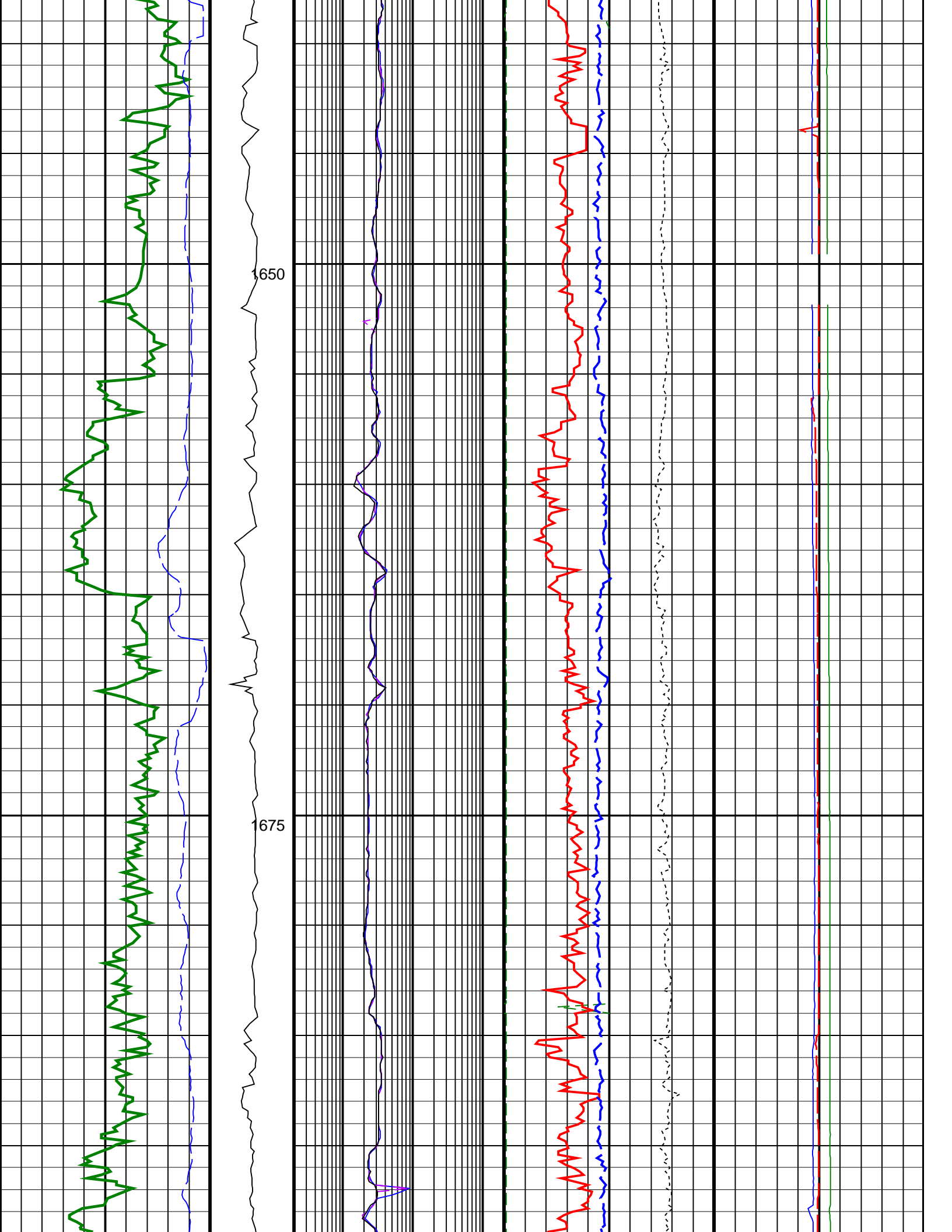


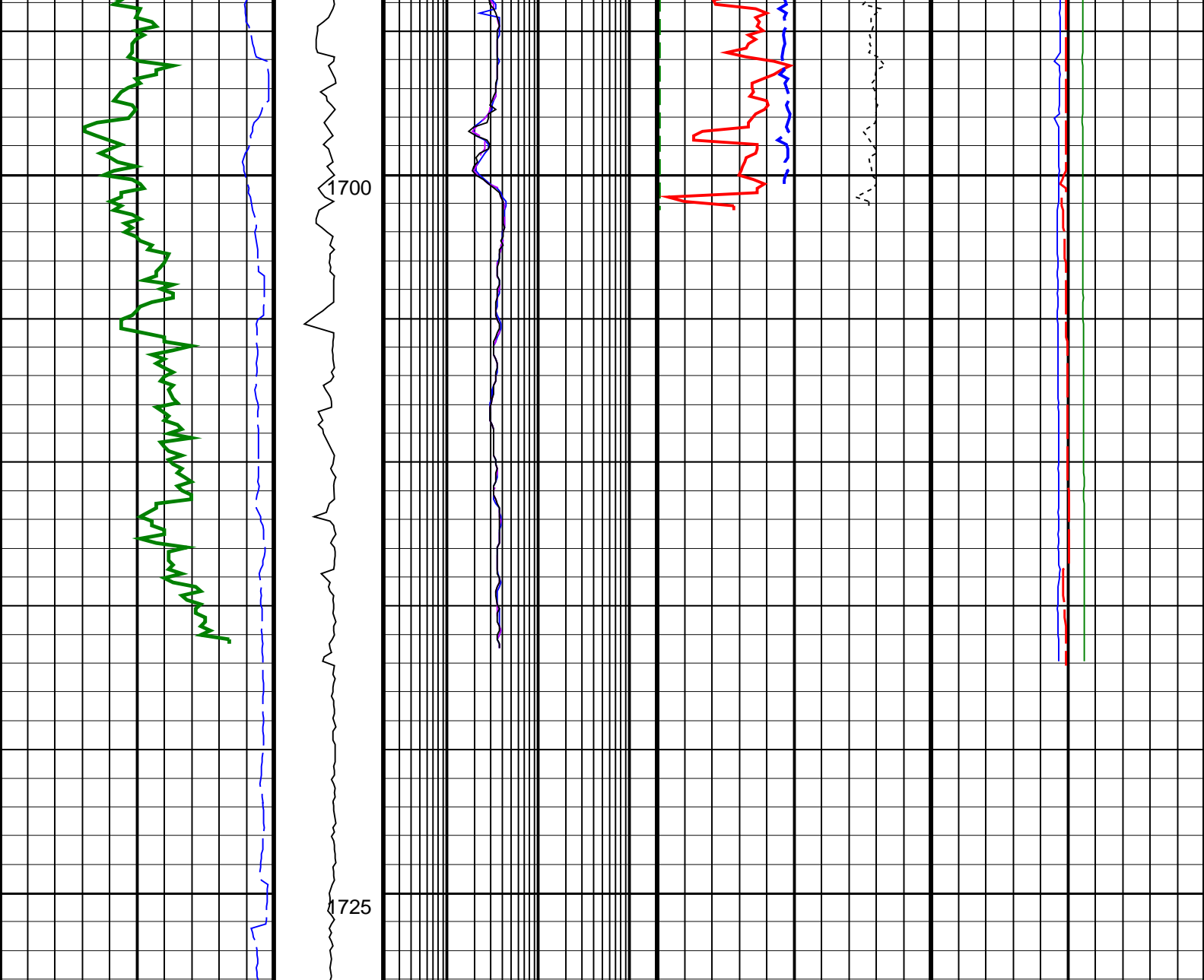
1550

1575









<div>ROP*5 (ROP5) (M/HR)</div> <div>2000</div>	<div>MWD Collar RPM (CRPM_RT) (RPM)</div> <div>0400</div>	<div>ARC BHCORR Phase-Shift Resistivity 16-in. at 2 MHz, Real-Time (P16H_RT)</div> <div>0.2200 (OHMM)</div>	<div>Photoelectric Factor, Bottom, Real-Time (PEB_RT)</div> <div>010 (G/C3)</div>	<div>Bulk Density Correction, Bottom, Real-Time Computed Downhole (DRHB_DH_ RT) (G/C3)</div> <div>-0.250.25</div>	<div>ARC Annulus Pressure (APRS_RT)</div> <div>06000 (PSI)</div>
<div>ARC Gamma Ray, Real-Time (ARC_GR_RT)</div> <div>0200 (GAPI)</div>		<div>ARC BHCORR Phase-Shift Resistivity 28-in. at 2 MHz, Real-Time (P28H_RT)</div> <div>0.2200 (OHMM)</div>	<div>Bulk Density, Bottom, Real-Time Computed Downhole (ROBB_DH_RT)</div> <div>1.852.85 (G/C3)</div>	<div>ARC Annulus Temperature (ATMP_RT)</div> <div>0200 (DEGC)</div>	
		<div>ARC BHCORR Phase-Shift Resistivity 40-in. at 2 MHz, Real-Time (P40H_RT)</div> <div>0.2200 (OHMM)</div>	<div>Thermal Neutron Ratio, Bottom, Real-Time (TNRB_ RT) (PU)</div> <div>4515</div>	<div>ARC Equivalent Circulating density (ECD_ARC_RT)</div> <div>1015 (LB/G)</div>	

PIP SUMMARY

Density Samples

Gamma Ray Samples

Resistivity Samples

Neutron Samples

